

Raven's Wing

11/09/2002

To the Men and Women of the Raven, Greetings.

Hello Everyone,

Well there is not much of the season left, just three shows to go: Llanthony Priory in Gloucester on 21/22 September, St Joseph's School Laverstock on 28 September and Battle Abbey 12/13 October.

The St Joseph's School show is only a small event on Saturday afternoon, if you can come please try to be there by mid-day to set up. Most of you should be able to find the school as it is on the same campus as St Andrew's School where we have held training weekends. If you are coming and can't remember how to get there give me a ring.

Brockholes went well apart from the rain the night everyone arrived, this didn't effect the show as both the arena and LHE site were fairly well drained, the plastic camp however was not. The plastic camp soon began to resemble a swamp. The show followed the usual format with great performances from all concerned. Manaraefan in particular made a great impression, being the core of the Kiddie Vike and Hrothgar's Story, Maria extracting Owain's teeth while I helped hold him down while trying to get him to tell us where the Viking raiders were and finally Dave and I taking apart the Viking Hearth Troop with our arrows.

We also tried out a new warrior class on the last day, the original idea was Kath Hall's but Kathy Barry and Di Craddock were the first to become "walking corpses" or "stunt bodies" or "non-com warriors". The idea is to dress up non-coms as warriors and at the end of a combat phase they throw themselves on the weapons of the enemy and play dead. This way we get more warriors entering the arena and have a scattering of bodies through out the battle. A number of non-coms have expressed an interest in having a go so lets hope this idea catches on.

We held an all thing at Brockholes but the most contentious issue seemed to be about the amount of messages in the Vike Email List. People seemed to object to the long discussions about "silly" things. If you are on the list you will be aware of what is going on and if you are not I don't suppose you are very interested!

The Dorchester show also went well. Hrafnsliith and Manaraefan, being close, had the largest turnouts, about ten adults each with another half dozen or so from other groups. The LHE was just Hrafnsliith and Manaraefan with Russell setting up his trade stall. Those members of the public that were able to find us seemed to be impressed with what we had to show them and say and we had a pleasant time. We did two combat displays on Saturday and one on Sunday. This required a lot of effort by all

concerned as the arena was large enough to hold show jumping and carriage racing events. Fortunately the audience was used to watching small groups in a big field and we seemed to get away with it. From our point of view the arena was too big even for a major muster. We were luck with the weather we had two short showers on Saturday but the wind was more of a problem, the tent pegs needed replacing several times.

I can't make it to Gloucester myself but I hope all those who go have a good time and I will see you all at Battle Abbey.

Roger

Trade Fair News

The re-enactors market that has previously been at Blackbird Leys is moving. The new location is:

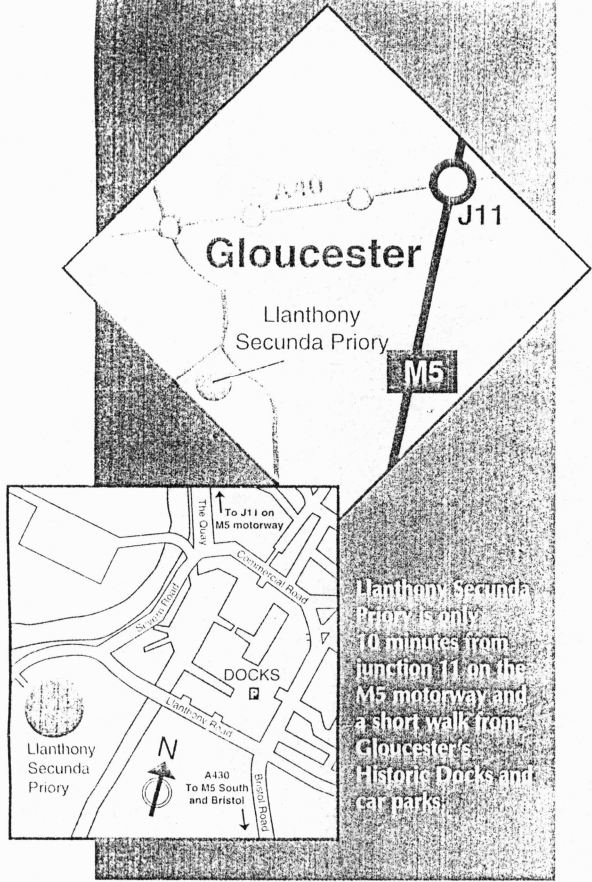
Warwickshire Exhibition Centre
The Fosse
Fosse Way
Leamington Spa
Warwickshire
CV31 1XN

This is off junction 12 of the M40, near the junction of the A425/B4455.
Note that it is NOT the Stoneleigh showground!

The next market takes place on the 15-17th November.

And finally...

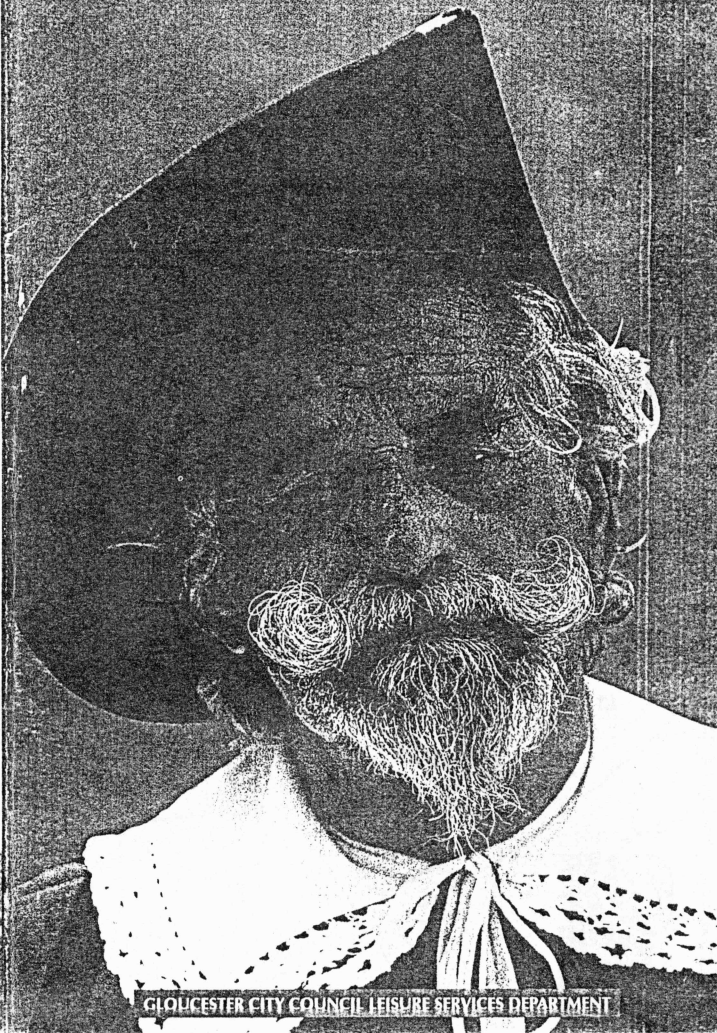
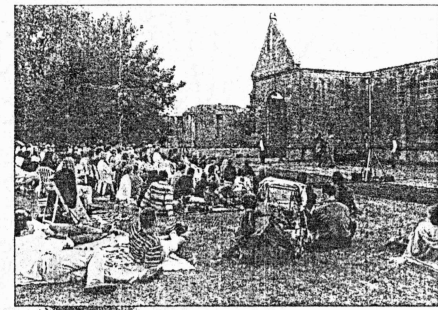
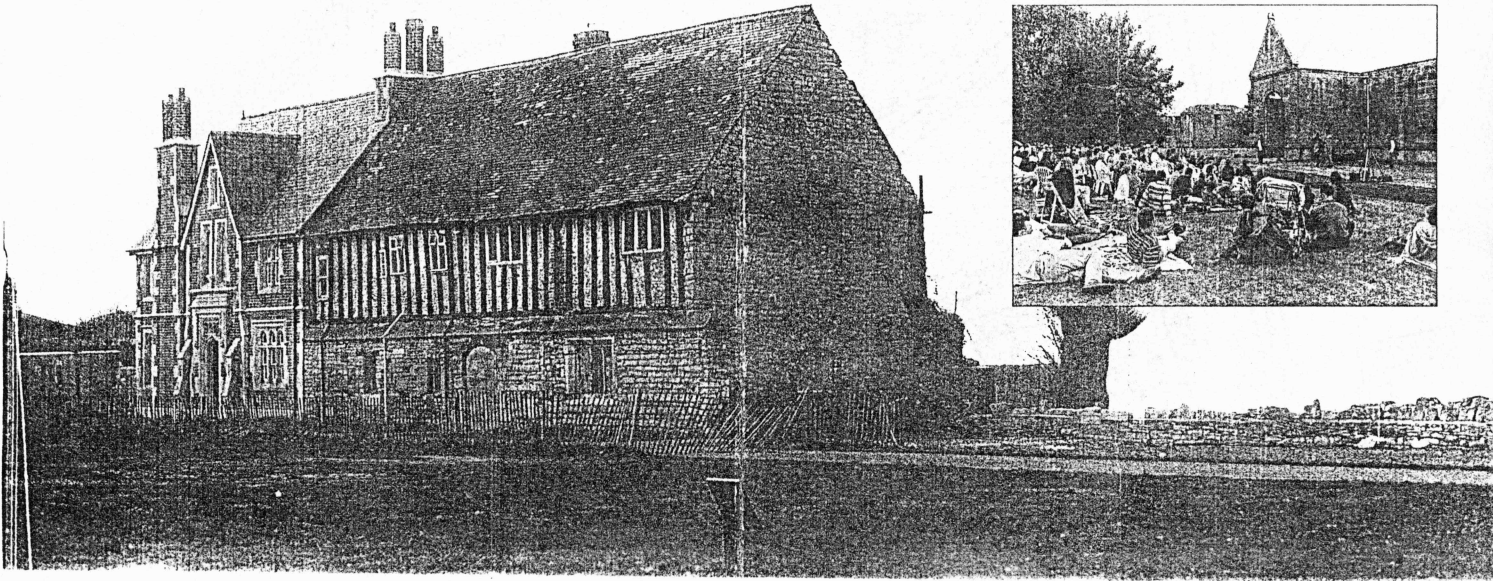
The Llanthony Priory details again – see attached.



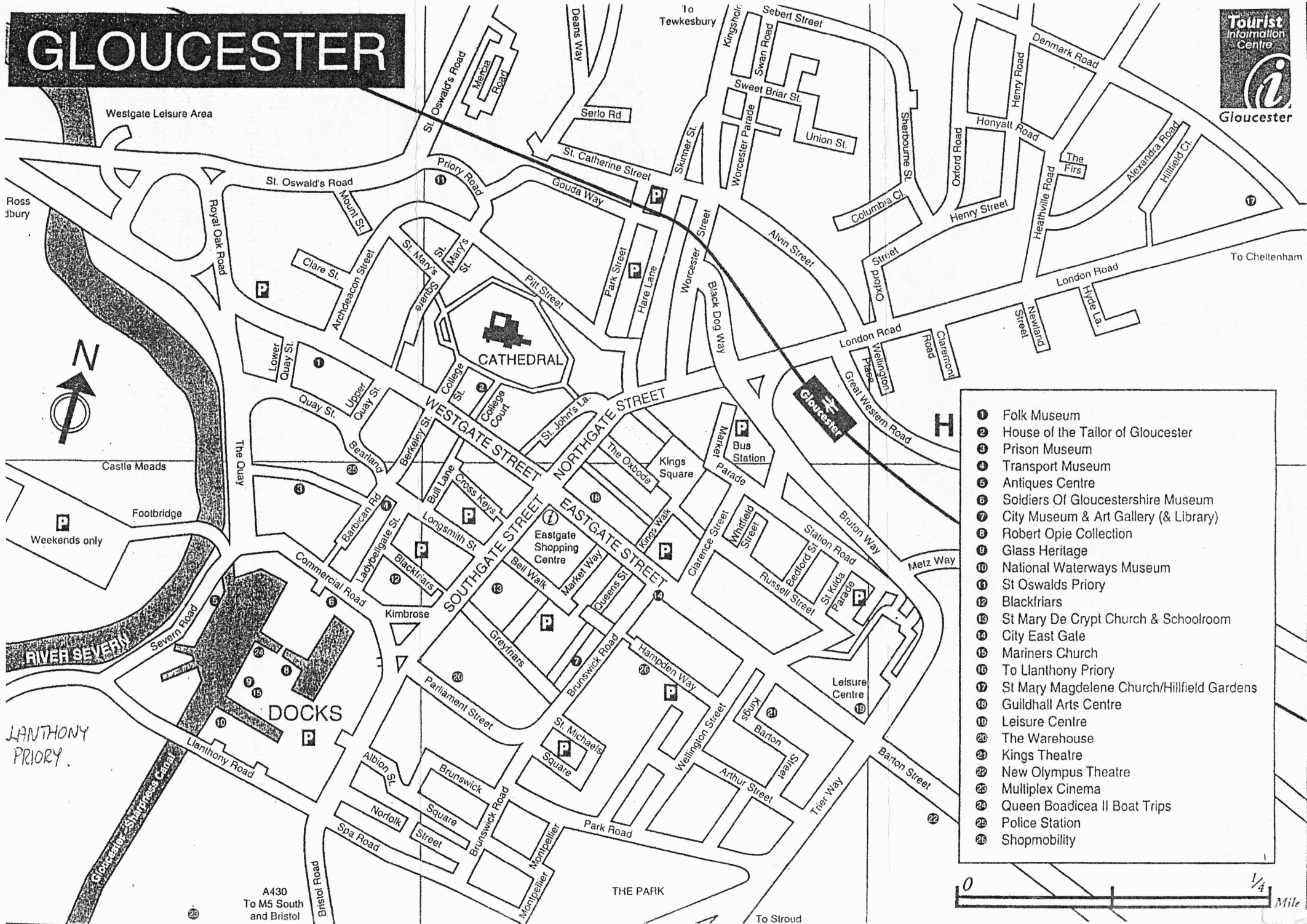
Photographs courtesy of Jim Preston and Tony Hickey. Plays photography are from last years' Becket and Merchant of Venice. Designed by MBM Design 01285 655944

THE FIRST LANTHONY PRIORY, an Augustinian monastery near Abergavenny in Wales, was seized by Welsh rebels in 1136. The fugitive prior and his canons founded the second Llanthony Priory, at Gloucester, in the same year. They built a new church in only sixteen months and finished the priory by 1150. The founder was Miles of Gloucester, who led the civil war against King Stephen, and the site was attached to his Gloucester castle. Miles and his descendants the Bohuns, hereditary constables of England, were buried for ten generations in the priory church and chapter house. Llanthony Priory once ranked seventh among the Augustinian monasteries of England. Sadly, the church and cloister have now gone, but ruined buildings still surround the inner courtyard which was the focus of the practical day-to-day life of the priory, providing a unique setting for outdoor theatre and living history events.

People & Plays at the Priory



GLOUCESTER



- 1 Folk Museum
- 2 House of the Tailor of Gloucester
- 3 Prison Museum
- 4 Transport Museum
- 5 Antiques Centre
- 6 Soldiers Of Gloucestershire Museum
- 7 City Museum & Art Gallery (& Library)
- 8 Robert Opie Collection
- 9 Glass Heritage
- 10 National Waterways Museum
- 11 St Oswalds Priory
- 12 Blackfriars
- 13 St Mary De Crypt Church & Schoolroom
- 14 City East Gate
- 15 Mariners Church
- 16 To Lanthony Priory
- 17 St Mary Magdelene Church/Hillfield Gardens
- 18 Guildhall Arts Centre
- 19 Leisure Centre
- 20 The Warehouse
- 21 Kings Theatre
- 22 New Olympus Theatre
- 23 Multiplex Cinema
- 24 Queen Boadicea II Boat Trips
- 25 Police Station
- 26 Shopmobility

A430
To M5 South
and Bristol

THE PARK



LANTHONY
PRIORY.

DOCKS

CATHEDRAL

Westgate Leisure Area



Weekends only

Footbridge

Castle Meads

Ross
bury

To Cheltenham

To
Tewkesbury

To Stroud