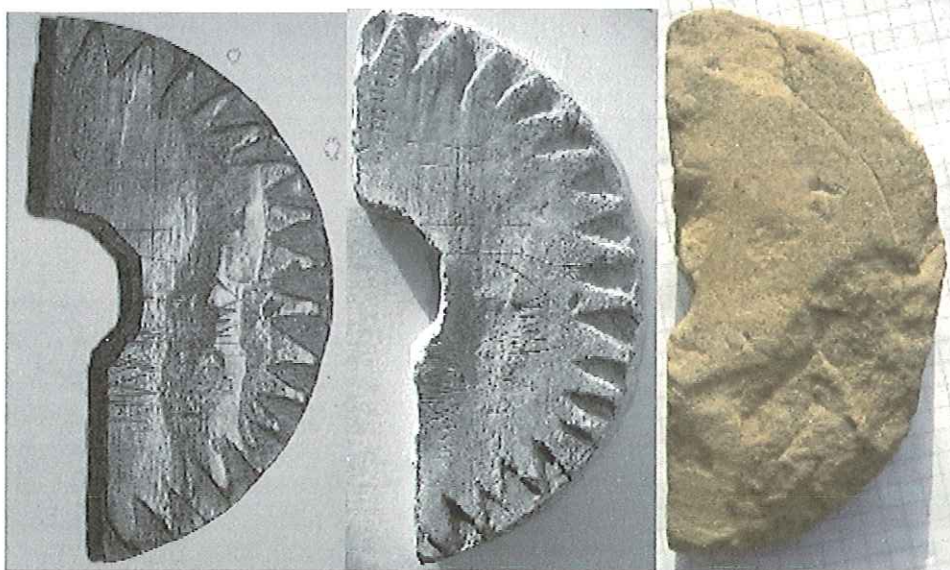


Bearing-dials from Greenland and Denmark

Examples of bearingdials used for mapping of selected geographic areas. The first two - nearly equal dials - are used for sailing between Greenland and Vinland. The third bearingdial has been used for mapping Zealand in Denmark. The pictures below are showing differences on a subset of the compassrose.



Photos (except the upper left from Navigationens historie I, Thirslund 1987, p.38) are copyright 2001 - 2003 Erik Torpegaard, and more detailed examples can be produced. The photo at left are showing one of the original bearing-dials exhibited from The National Museum of Denmark. The photo (item) is similar to the upper left item and the compass rose below.

[Return to mainsite](#)

The bearing-dials has been used as is, i.e. they are not broken.

Materials:
Larch and sandstone.

C-14 for the wood used:
calibr. +- 1
stand. dev.:
895-1010 AD

